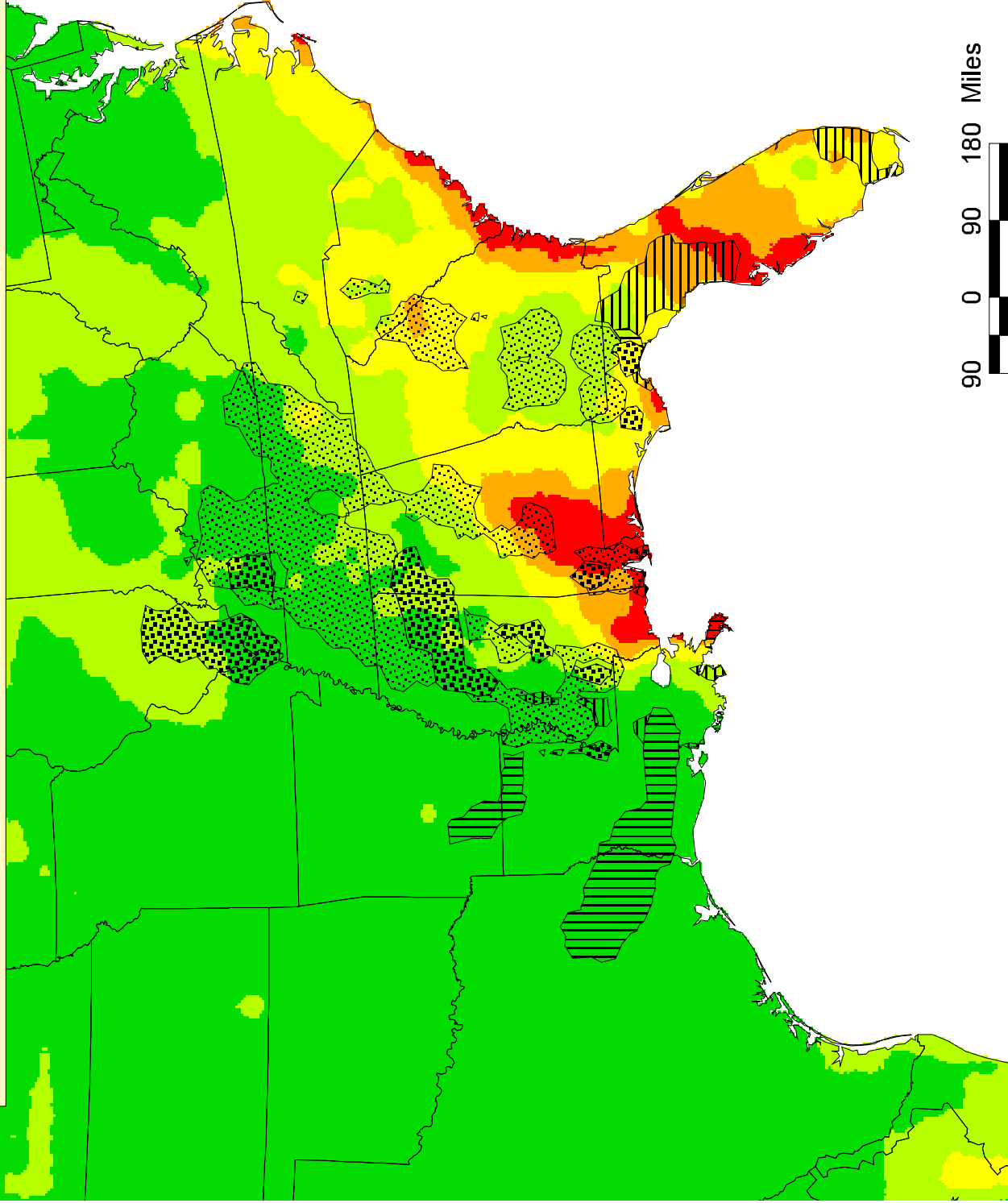


August 27 - September 24 2009 weekly spore dispersal based on all known spore sources of soybean rust in the U.S. and Mexico and rainfall favorability



Shaded areas for spore deposition [log(number of spores per square meter)]>-5 at ground level

Week1
Week2
Week3
Week4

Rainfall Favorability

0 - 20 Very Low
20 - 40 Low
40 - 60 Medium
60 - 80 High
80 - 100 Very High

Note: There are two predictions, one for spore movement (scale in black/white) and one for rainfall favorability (scale in colors). Disease risk is considered only in areas where spores can reach. In area where spores can reach, the higher the rainfall favorability is, the higher the risk is.